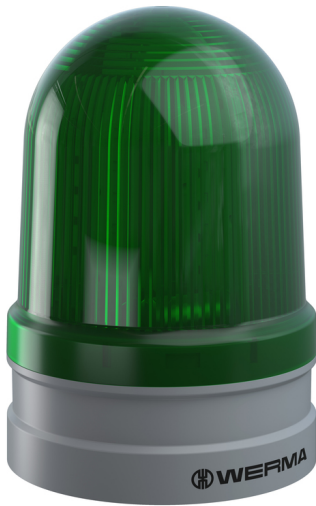


Maxi free-standing Beacons / EvoSIGNAL
Maxi TwinFLASH 115-230VAC GN


| | |
|-----------|----------------|
| Part No.: | 262.220.60 |
| Series: | EvoSIGNAL Maxi |

**MECHANICAL DATA**

| | |
|------------------------------|-----------------------------|
| Height | 173 mm |
| Diameter | 120 mm |
| Materials | PC PC/ABS |
| Dome colour | Green |
| Housing colour | Grey |
| Protection category | IP66 |
| Connection | Push-in terminal |
| cross-sectional area minimum | 0,25mm ² / 24AWG |
| cross-sectional area maximum | 1,50mm ² / 16AWG |
| Working temperature minimum | -30°C |
| Working temperature maximum | +60°C |
| Weight with packaging | 500 g |
| Product weight | 400 g |

ELECTRICAL DATA

| | |
|-----------------------------|------------------------------|
| Operating voltage | 115-230V |
| Operating voltage type | AC |
| Operating voltage frequency | 50Hz at 230V 60Hz at 115V |
| Operating voltage tolerance | +/- 10% |
| Rated operational voltage | 230 VAC |
| Rated operational current | 165 mA |
| Rated inrush current | <6000 mA |
| Protection class | Protection class 2 |
| Pollution degree | 3 |
| Overvoltage category | II |
| Isolation voltage | Ui = 250V; Uimp = 2.500V |

OPTICAL DATA

| | |
|------------------------------|---------------------------|
| Light source | LED |
| Light colour | Green |
| Optical signal image | EVS Flash TwinFlash |
| Flash frequency | 1 Hz |
| Service life optical | 50,000 h minimum |
| Pulse- & pause Duration [ms] | 48ON, 96OFF, 48ON, 820OFF |

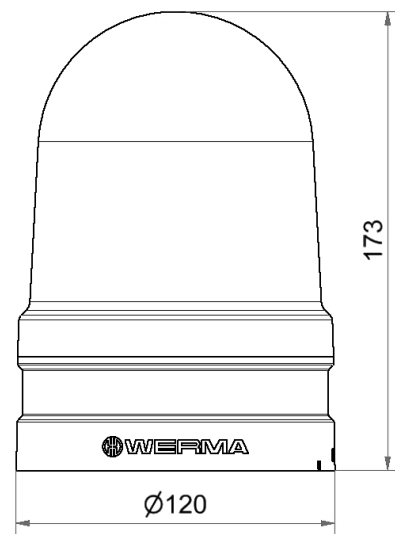


For additional installation and mounting information, refer to the appropriate user guide at www.werma.com. This printed copy is for information only and is subject to alteration.

Maxi free-standing Beacons / EvoSIGNAL
Maxi TwinFLASH 115-230VAC GN

| APPROVAL DATA | |
|-------------------------------|-----------------------|
| Conforms with CE | Yes |
| WEEE | Yes |
| Conform with ATEX-directive | No |
| Conforms with CCC | Yes |
| Conforms with UL | cULus |
| UL Type Rating | Type 12 |
| Conforms with FCC | No |
| Conforms with IC | No |
| EAC certificate available | Yes |
| Conforms with UKCA (Importer) | Yes (WERMA (UK) Ltd.) |
| Conforms with AS-I | No |
| ICAO Certification | No |
| Conforms with GL | No |
| Conforms with RoHS CN | No |
| Conforms with VdS | No |

DRAWING



For additional installation and mounting information, refer to the appropriate user guide at www.werma.com. This printed copy is for information only and is subject to alteration.